



MAST[®] CARBA PAcE

Pseudomonas, **A***cinetobacter*, **E***nterobacterales*
Rapid carbapenemase detection



Results in less than 10
minutes from culture



Simple test process
in 5 simple steps



Cost effective
screening solution



Easy integration into
existing workflows

MAST® CARBA PAcE

Antimicrobial resistance is one of the most urgent global healthcare challenges. Healthcare-associated infections (HAIs) remain a major cause of morbidity, with carbapenem-resistant Gram-negative bacteria such as Enterobacterales (CRE), *Pseudomonas aeruginosa* and *Acinetobacter baumannii* posing a serious threat due to high resistance levels and wide-spread transmission.

Rapid identification of carriers is essential to support infection control, prevent outbreaks, and guide effective antimicrobial stewardship.



What is **MAST®** CARBA PAcE?

MAST® CARBA PAcE is a rapid, colorimetric screening test for the detection of carbapenemase-producing *Pseudomonas* spp., *Acinetobacter* spp. and Enterobacterales.

Using a novel chromogenic cephalosporin analogue, this test delivers reliable results in under 10 minutes without the need for specialist equipment, enabling seamless integration into routine laboratory workflows.

The test specifically detects clinically and epidemiologically significant carbapenemase activity by eliminating interference from ESBL and AmpC enzymes. Reducing unnecessary patient isolation and supports prompt, informed treatment decisions.



Rapid results

Detects carbapenemase activity in <10 minutes from culture



Cost-effective

Conveniently contains 48 tests per kit for efficient routine screening



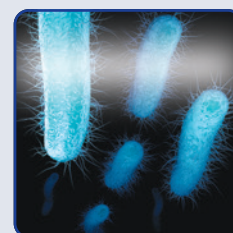
Easy integration

Requires standard laboratory supplies, adaptable to any workflow



Simple workflow

5 easy steps with a colour change from yellow to orange/red indicating carbapenemase activity



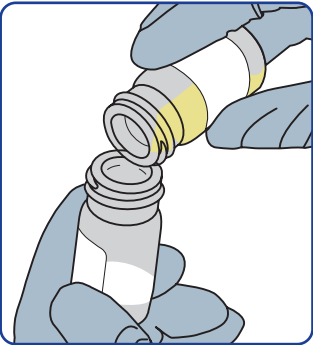
High performance

Validated against VIM, IMP, NDM, OXA-48-like, OXA-23 and KPC

MAST® CARBA PAcE

5 Simple Steps

Reconstitute

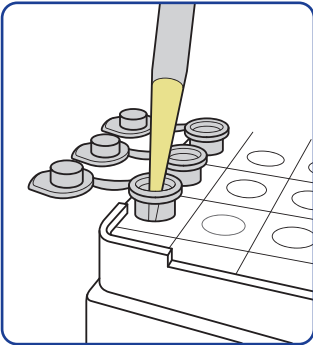


Reconstitute the pellet by tipping the entire contents of vial RB into vial PEL.



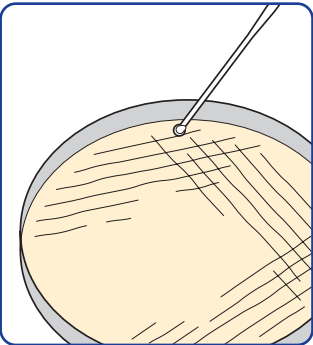
Allow the pellet to fully dissolve at room temperature for 1 minute and mix contents by gently vortexing for 10 seconds.

Dispense

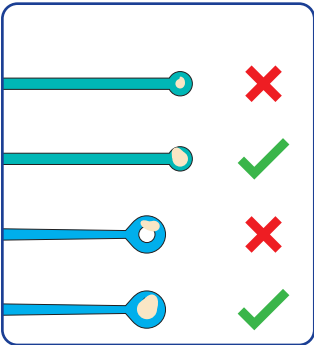


Dispense 250µl of reconstituted solution into the tubes provided. One tube per test.

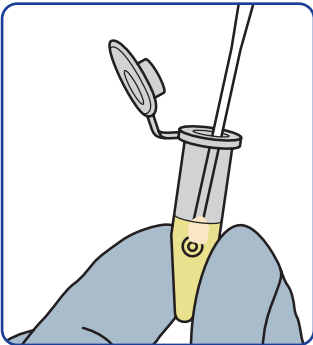
Inoculate



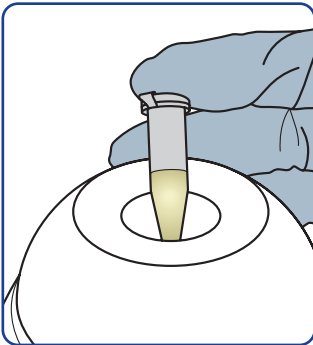
Use a pure, fresh culture of the test organism.



Take an approximate 1 - 5µl loopful of organism.

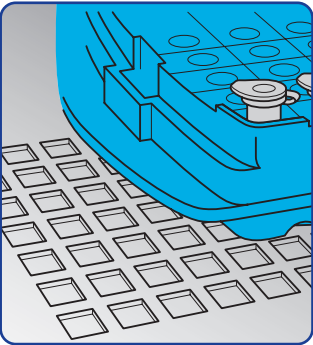


Add to the tube containing test solution.



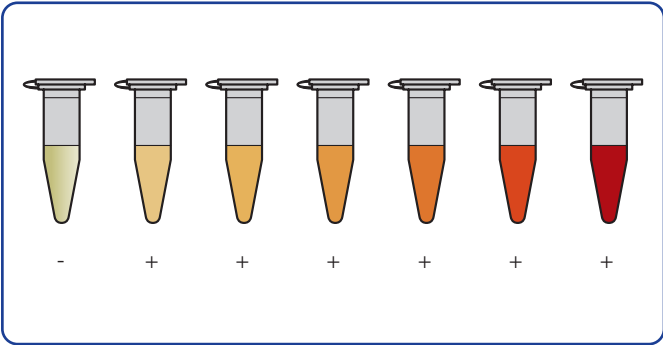
Mix well by vortexing for 20 seconds.

Incubate



Incubate at 35±1°C for 10 minutes.

Read by eye



Record the colour of the test solution immediately or up to 20 minutes after incubation.

Figure 1 - **MAST®** CARBA PAcE Process
Please refer to product Instructions for Use for Procedure.

Ordering Information

Order Code	Product	Pack Size	No. Tests
PACE-ID	MAST [®] CARBA PAcE	4 x 12 tests	48

Additional related products from Mast's AMR range

Order Code	Product	No. Tests
D73C	MASTDISCS [®] <i>Combi Carba plus</i>	50
D72C	MASTDISCS [®] <i>Combi AmpC, ESBL & Carbapenemase Detection Set</i>	50
D74	MAST [®] ICT - Indirect Carbapenemase Test	25



Acknowledgement

HMRZ compound used in this product was developed by Dr. Hideaki Hanaki of Kitasato Institute, Japan.

United Kingdom Mast Group Ltd. Mast House, Derby Road, Bootle Merseyside L20 1EA +44 (0)151 933 7277 sales@mastgrp.com	Germany Mast Diagnostica GmbH Feldstraße 20 23858 Reinfeld +49 (0)4533 2007 0 mast@mast-diagnostica.de	France Mast Diagnostic 12 rue Jean-Jacques Mention CS91106, 80011 Amiens, CEDEX 1 +33 (0)322 80 80 67 info@mast-diagnostic.fr	South Africa Davies Diagnostics 145 Oak Avenue, Ferndale Randburg, Gauteng, 2194 +27 11 777 7600 info@daviesdiag.co.za
--	--	---	--