

IVD solutions through partnership



MAST URI[®] CONNECT

The Connected Solution for Urine Microbiology

- Direct Susceptibility Testing - Results in 18 hours
- Phenotypic Results Analysis - ID, AST and AMR
- End-to-End Sample Traceability
- Integrated EUCAST-aligned Reading Rules
- New Front End Automation



Urinary Tract Infections (UTIs) are one of the most common conditions presenting in primary healthcare. Traditional methods of urine culturing are labour intensive and slow. Laboratories are often left facing rising sample numbers with the expectation of faster turnaround times, often without additional resources.

The **MAST URI® CONNECT** provides a connected solution to Urine Microbiology.



MAST URI®
WELL CONNECT



MAST URI®
PREP CONNECT



MAST URI®
AUTOPREP CONNECT

Sample preparation

MAST URI® CONNECT provides laboratories with the opportunity to select from three sample dispensing options. Consistent with all options is the use of a barcoded template, a Urine Specimen Plate (USP). This bridges the gap in sample traceability, connecting the barcoded patient samples to the barcoded **MAST URI® Plates**.

The three dispensing options are:

MAST URI® WELL CONNECT

A semi-automated dispensing aid that simplifies workflow, initiates end-to-end traceability and aids in accurate sample dispensing.

MAST URI® PREP CONNECT

Utilising the **MAST URI® WELL CONNECT**, this option allows for a user to perform sample preparation while simultaneously freeing up the **MAST URI® PLUS CONNECT** for plate reading and result validation.

MAST URI® AUTOPREP CONNECT

A fully-automatic, walkaway dispensing solution that frees up valuable laboratory team members, making this ideal for larger throughput requirements.



MAST URI® DOT CONNECT

Sample inoculation

Following the completion of the dispensing process, the Urine Specimen Plate (USP) is then used to inoculate bespoke **MAST URI® Plate Sets** using multipoint inoculation. **MAST URI® DOT CONNECT** utilises barcode readers for both the USP template and **MAST URI® Plates** to facilitate end-to-end traceability, and track pin sterilisation through audited disinfection.



MAST URI® PLUS CONNECT

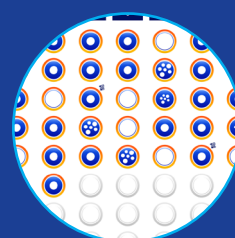
Sample capture

Once incubated, the **MAST URI® Plates** are imaged on the **MAST URI® PLUS CONNECT**, with images and sample information being imported into the database for validation. The **MAST URI® PLUS CONNECT** saves precious bench space by incorporating a built-in PC, boasts a high-resolution camera for sharper image capture and possesses refined software for seamless sample analysis.

Sample validation

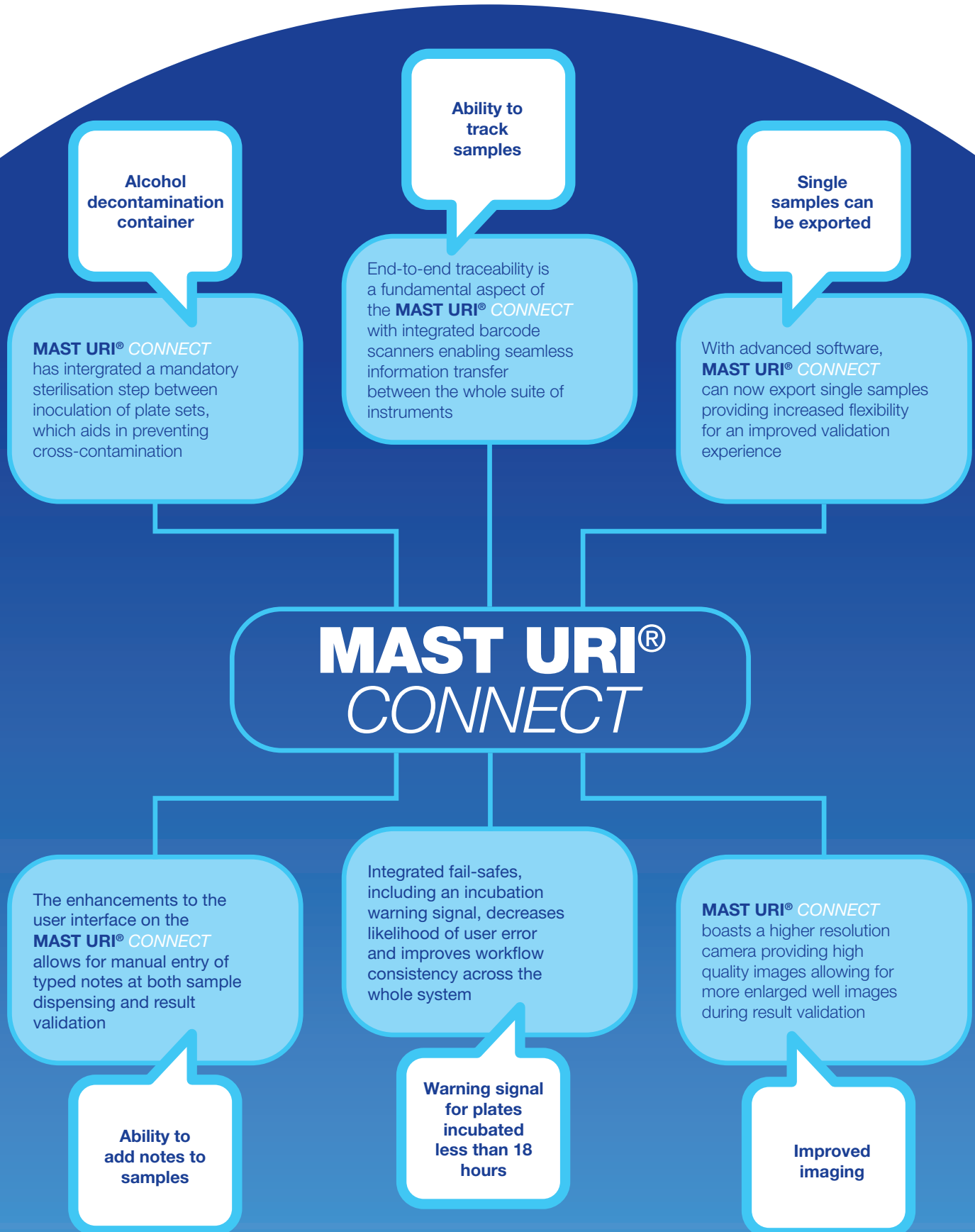
The overhauled **MAST URI® CONNECT** software has been built from the ground up, focusing on greater accessibility, streamlining workflow and having a strong focus on traceability. It encompasses EUCAST expert reading rules, assisting in the exporting of clinically relevant results. The combination of sharper images and an all-encompassing sample analysis screen, ensures an efficient validation process presenting a complete collection of sensitivity and identification.

Once validated, samples are exported to LIMS and the **MAST URI® CONNECT** can be fully interfaced.



Next Generation Urine Analysis

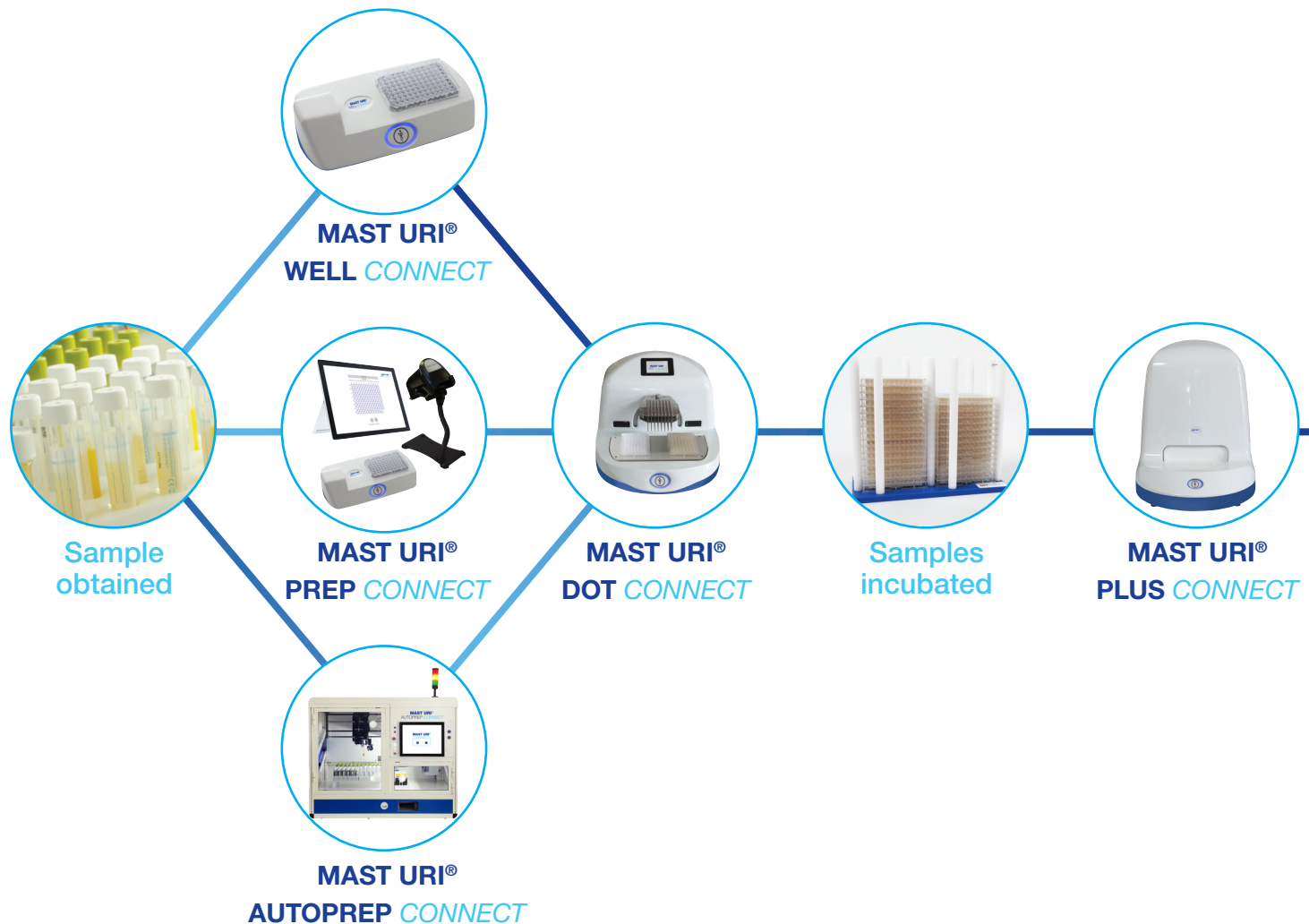
Get **CONNECT**



Product development based on real customer feedback.

The **MAST URI® CONNECT** reduces staff processing time by up to 70%¹

MAST URI® CONNECT process > 18 - 24 hours



Traditional process > 36 - 48 hours

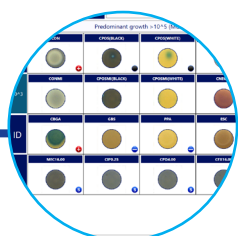


MAST URI® *CONNECT* is a sustainable alternative to the traditional process with an **85%** reduction in plastic and **96%** reduction in agar waste.²

Our MAST URI® *Plates* are produced according to current EUCAST breakpoint guidelines with an average **100%** sensitivity and **93.3%** specificity.³

The new MAST URI® *CONNECT* builds on its renowned predecessor the MAST URI® system.

By using fewer consumables MAST URI® *CONNECT* streamlines urine AST and saves on storage space.



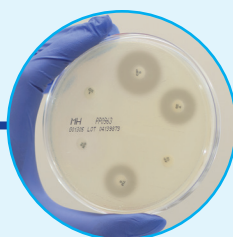
Organism ID
and AST
sensitivity



AST profile
prepared



Samples
incubated



AST profile
obtained



Results
validated

Introducing MAST URI® AUTOPREP CONNECT



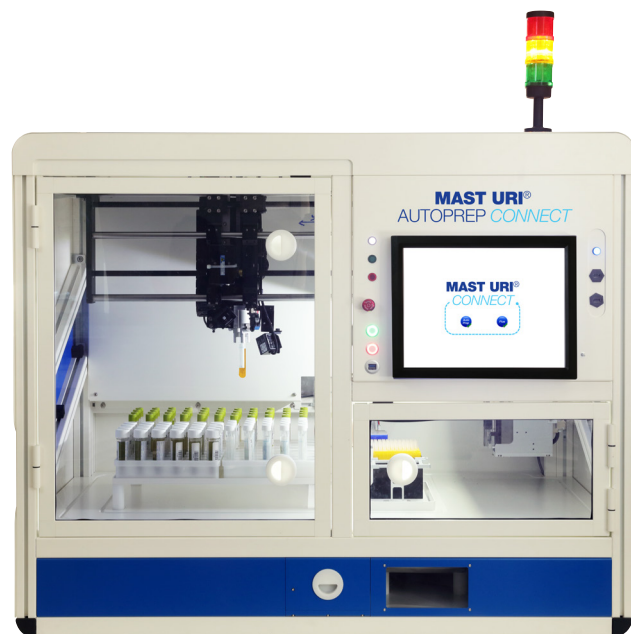
Specimen tube compatibility

A range of tubes commonly used in urine sample processing can be processed on the device.



Easy Setup

Internal deck layout is designed for rapid loading and easy cleaning for a faster workflow.



Barcode recognition

Integrated barcode readers allow the device to maintain full end-to-end traceability for tracking of samples.



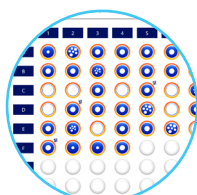
Automatic Decapping

Decaps all samples reducing the likelihood of cross contamination from manual handling and reduces risk of RSI.



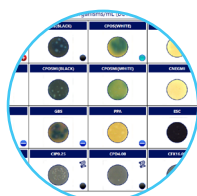
Vortexing and Pipetting

Automatic vortexing and liquid level detection of each sample occurs before sample aspiration and dispensing.



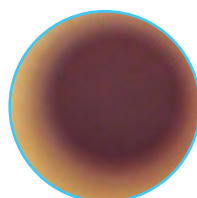
Improved user interface

Upgraded software technology and a new LED touch screen monitor provides customers with improved accessibility.



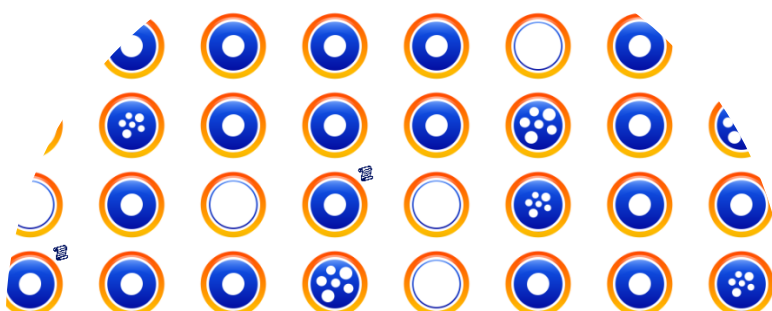
Simplified workflow process

Simultaneously display ID, sensitivity data, patient demographics, EUCAST reading rules and manual typed notes.



High quality well images

Higher resolution images with the new zoom function greatly enhances efficiency for validation, further reducing reporting times.



New MAST URI® CONNECT Interface

MAST URI[®] PLATES

MAST URI[®] PLATES: Antibiotic and Identification plates; current availability (subject to change)
Antibiotic plates aligned with EUCAST Clinical Breakpoints V15.0

Code	Plate Type	Code	Plate Type
MPM-AK8	Amikacin 8mg/L	MPM-FOS8	Fosfomycin 8mg/L
MPM-A8	Amoxicillin 8mg/L ¹	MPM-GM2	Gentamicin 2mg/L
MPM-AUG8	Amoxicillin-Clavulanate 8mg/L ¹	MPM-MEC8	Mecillinam 8mg/L
MPM-AMC32	Amoxicillin-Clavulanate 32mg/L ¹	MPM-NI64	Nitrofurantoin 64mg/L
MPM-AP8	Ampicillin 8mg/L ¹	MPM-PTZ8	Piperacillin-Tazobactam 8mg/L
MPM-CFX16	Cefalexin 16mg/L	MPM-TEM16	Temocillin 16mg/L
MPM-CXM8	Cefuroxime 8mg/L	MPM-TM4	Trimethoprim 4mg/L
MPM-CPD1	Cefpodoxime 1mg/L	MPM-TS2/38	Trimethoprim 2mg/L + Sulfamethoxazole 38mg/L
MPM-CIP0.25	Ciprofloxacin 0.25mg/L		
MPM-CIP0.5	Ciprofloxacin 0.5mg/L	MPM-VA4	Vancomycin 4mg/L
MPM-CRO1	Ceftriaxone 1mg/L		

¹For information on how to implement aminopenicillin breakpoints, see www.eucast.org/eucastguidancedocuments/

Plates for Identification: Identification Plate Set

Code	Description
MPM-CON	Control
MPM-CPOS	Chromogenic Gram-positive
MPM-CNEG	Chromogenic Gram-negative
MPM-CBGA	Chromogenic Beta Glucuronidase
MPM-IDM51	Aesculin
MPM-IDM52	Phenylpyruvic Acid
MPM-IDM62	Chromogenic Group B Strep

Detection of Antimicrobial Activity

Code	Description
MPM-IDM54	Antimicrobial Activity Indicator (AAI) plate

Plates for Antimicrobial Resistance Detection

Code	Description
MPM-CRE	Carbapenemase screening plate
MPM-CPD4	Detection of ESBL's. Eliminates bacteria lying on EUCAST breakpoint (1mg/L)

Notes

Recent taxonomic studies have narrowed the definition of the Family Enterobacteriaceae. Some previous members of this family are now included in other families within the Order Enterobacterales. These breakpoints apply to all members of the Enterobacterales.

Direct culture and sensitivity testing of samples from patients on antibiotics may give misleading results due to inhibition of pathogens. To facilitate detection of antimicrobial activity in urine samples the Antimicrobial Activity Indicator plate (MPM-IDM54) may be included in the Plate Set if required.

These plates are currently available with a four to six-week lead-time.

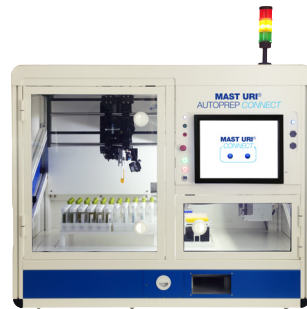
Flexible. Traceable. Sustainable.
The connected solution to Urine Microbiology.

MAST URI[®] CONNECT

Product Specifications

MAST URI[®] CONNECT full machine product range.

MAST URI[®] AUTOPREP CONNECT



MAST URI[®] WELL CONNECT



MAST URI[®] PREP CONNECT



Weight	200 kg	0.61 kg	Tablet: 0.77 kg USB Hub: 0.52 kg
Dimensions	1450W x 650D x 1088H mm	100W x 270D x 200H mm	Tablet: 292W x 8.5D x 201H mm USB Hub: 130W x 30D x 70H mm
Power requirements	240 VAC, 50/60 Hz, 500 W	USB powered	240 VAC, 50/60 Hz, 199 W
Connectivity	Ethernet, USB	–	Ethernet, USB
Product code	URIAUTOPREPCONNECT*	URIWELLCONNECT	URIPREPCONNECT

MAST URI[®] DOT CONNECT



MAST URI[®] PLUS CONNECT



MAST URI[®] PLUS CONNECT Hardware



Weight	11.5 kg	21.5 kg	3.9 kg
Dimensions	380W x 415D x 290H mm	522W x 522D x 671H mm	565W x 175D x 433H mm
Power requirements	100–240 VAC, 50/60 Hz, 60 W	100–240 VAC, 50/60Hz, 220 W	90–264 VAC, 50/60Hz, 25W
Connectivity	Ethernet	USB, Ethernet, Display Port	USB, Ethernet, Display Port
Product code	URIDOTCONNECT	URIPLUSCONNECT*	URIPLUSCONNECT

*These devices will be fitted with an uninterruptible power supply (UPS)

Mast Group Ltd.
Mast House, Derby Road, Bootle, Merseyside L20 1EA
Tel: + 44 (0) 151 933 7277 e-mail: sales@mast-group.com

Mast Diagnostica GmbH
Feldstrasse 20, DE-23858 Reinfeld
Tel: + 49 (0) 4533 2007 0 Fax: + 49 (0) 4533 2007 68 e-mail: mast@mast-diagnostica.de

Mast Diagnostic
12 Rue Jean-Jacques Mention, CS 91106, 80011 Amiens CEDEX 1
Tél. + 33 (0) 322 80 80 67 Fax + 33 (0) 322 80 99 22 e-mail: info@mast-diagnostic.fr

www.mast-group.com



ZT275 v3.0 RM 08/25