

MAST URI[®] CONNECT

The Connected Solution for Urine Microbiology

- Direct Susceptibility Testing - Results in 18 hours
- Phenotypic Results Analysis - ID, AST and AMR
- End-to-End Sample Traceability
- Integrated EUCAST-aligned Reading Rules
- New Front-End Automation



Urinary Tract Infections (UTIs) are one of the most common conditions presenting in primary healthcare. Traditional methods of urine culturing are labour intensive and slow. Laboratories are often left facing rising sample numbers with the expectation of faster turnaround times, often without additional resources.

The MAST URI® CONNECT system provides a connected solution to Urine Microbiology.



MAST URI®
WELL CONNECT



MAST URI®
PREP CONNECT



MAST URI®
AUTOPREP CONNECT

1. Sample preparation

Mast Uri® CONNECT provides laboratories with the opportunity to select from three sample dispensing options. Consistent with all options is the use of a barcoded template, a Urine Specimen Plate (USP). This bridges the gap in sample traceability, connecting the barcoded patient samples to the barcoded **Mast Uri®** Plates.

The three dispensing options are:

Mast Uri® Well Connect

A semi-automated dispensing aid that simplifies workflow, initiates end-to-end traceability and aids in accurate sample dispensing.

Mast Uri® Prep Connect

Utilising the **Mast Uri® Well Connect**, this option allows for a user to perform sample preparation while simultaneously freeing up the **Mast Uri® Plus Connect** for plate reading and result validation.

Mast Uri® Autoprep Connect

A fully-automatic, walkaway dispensing solution that frees up valuable laboratory team members, making this ideal for larger throughput requirements.

2. Sample inoculation

Following the completion of the dispensing process, the Urine Specimen Plate (USP) is then used to inoculate bespoke **Mast Uri® Plate Sets** using multipoint inoculation. **Mast Uri® Dot Connect** utilises barcode readers for both the USP template and **Mast Uri® Plates** to facilitate end-to-end traceability, and tracks pin sterilisation through audited disinfection cycles.



MAST URI® DOT CONNECT



MAST URI® PLUS CONNECT

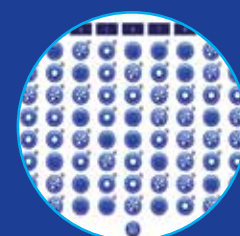
3. Sample capture

Once incubated, the **Mast Uri® Plates** are imaged on the **Mast Uri® Plus Connect**, with images and sample information being imported into the database for validation. The **Mast Uri® Plus Connect** saves precious bench space by incorporating a built-in PC, boasts a high-resolution camera for sharper image capture and possesses refined software for seamless sample analysis.

4. Sample validation

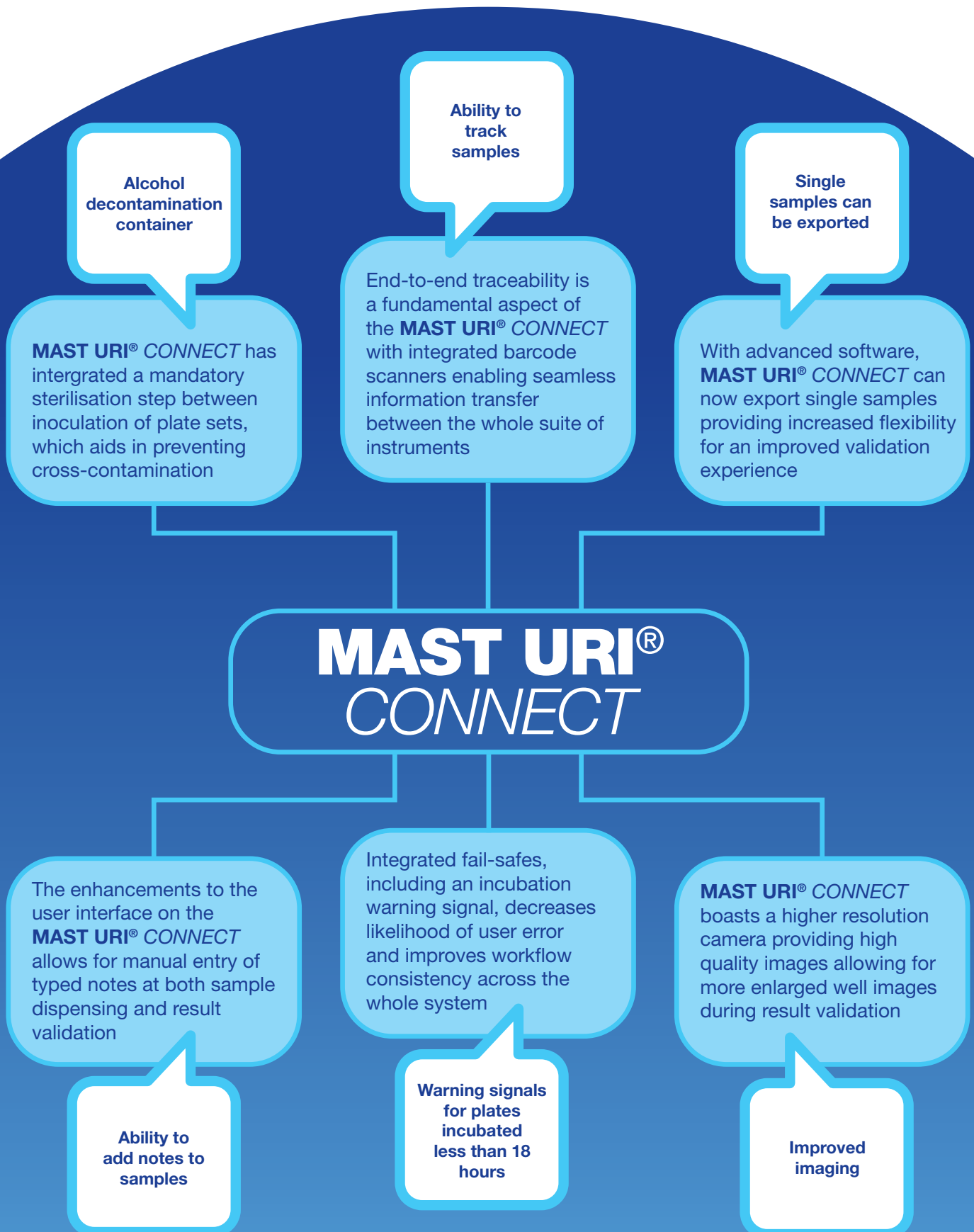
The overhauled **Mast Uri® Connect** software has been built from the ground up, focusing on greater accessibility, streamlining workflow and having a strong focus on traceability. It encompasses EUCAST expert reading rules, assisting in the exporting of clinically relevant results. The combination of sharper images and an all-encompassing sample analysis screen, ensures an efficient validation process presenting a complete collection of sensitivity and identification.

Once validated, samples are exported to LIMS and the **Mast Uri® Connect** can be fully interfaced.



Next Generation Urine Analysis

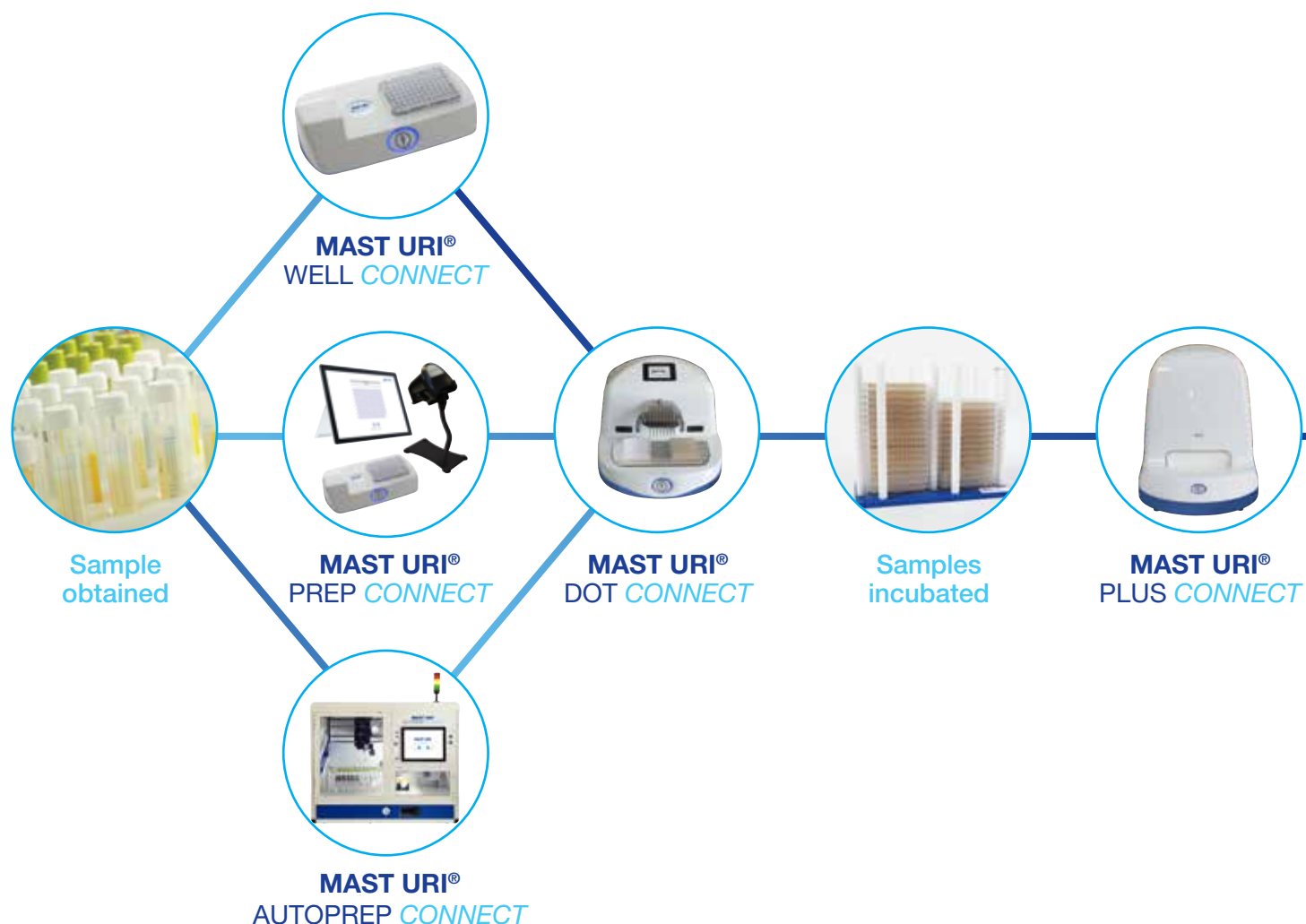
Get **CONNECT**ed



Product development based on real customer feedback.

The MAST URI® *CONNECT* reduces staff processing time by up to 70%¹

MAST URI® *CONNECT* process > 18 - 24 hours



Traditional process > 36 - 48 hours

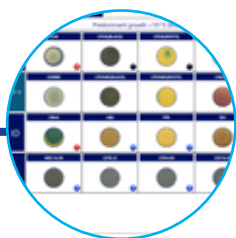


MAST URI® *CONNECT* is a sustainable alternative to the traditional process with an 85% reduction in plastic + 96% reduction in agar waste.²

Our MAST URI® *PLATES* are produced according to current EUCAST breakpoint guidelines with an average 100% sensitivity and 93.3% specificity.³

The new MAST URI® *CONNECT* builds on its renowned predecessor the MAST URI® *SYSTEM*.

By using fewer consumables MAST URI® *CONNECT* streamlines urine AST and saves on storage space.



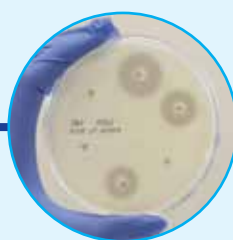
Organism ID
and AST
sensitivity



AST profile
prepared



Samples
incubated



AST profile
obtained



Results
validated

Introducing MAST URI[®] AUTOPREP CONNECT



Specimen tube compatibility

A range of different sample tubes can be processed, including: BD vacutainers[®], Sterilin[™] Monovettes and ISS Urine Containers.



Easy Setup

Internal deck layout is designed for rapid loading and easy cleaning for a faster workflow.



Barcode recognition

Integrated barcode readers allow the device to maintain full end-to-end traceability for tracking of samples.



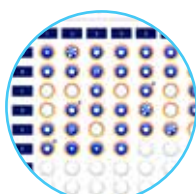
Automatic Decapping

Decaps all samples reducing the likelihood of cross-contamination from manual handling and reduces risk of RSI



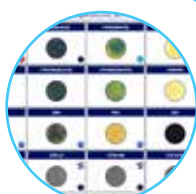
Vortexing and Pipetting

Automatic vortexing and liquid level detection of each sample occurs before sample aspiration and dispensing.



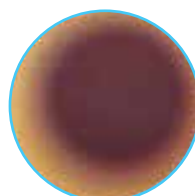
Improved user interface

Upgraded software technology and a new LED touch screen monitor provides customers with improved accessibility.



Simplified workflow process

Simultaneously display ID, sensitivity data, patient demographics, EUCAST reading rules and manual typed notes.



High quality well images

Higher resolution images with the new zoom function greatly enhances efficiency for validation, further reducing reporting times.



Front-end Automation

New MAST URI[®] Connect Interface

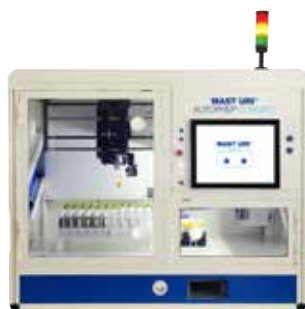
MAST URI® CONNECT

Product range

Product Specifications

MAST URI® CONNECT full machine product range.

MAST URI® AUTOPREP CONNECT



MAST URI® WELL CONNECT



MAST URI® PREP CONNECT



Weight	200 kg	1.2 kg	Tablet: 0.80 kg USB Hub: 0.52 kg Well Connect: 1.2kg
Dimensions	1450W × 650D × 1088H mm	300W × 150D × 80H mm	Tablet: 292W × 8.5D × 201H mm USB Hub: 130W × 30D × 70H mm
Power requirements	240 VAC, 50/60 Hz, 500 W	USB powered	240 VAC, 50/60 Hz, 199 W
Connectivity	Ethernet, USB	–	Ethernet, USB
Product code	URIAUTOPREPCONNECT	URIWELLCONNECT	URIPREPCONNECT

MAST URI® DOT CONNECT



MAST URI® PLUS CONNECT



MAST URI® PLUS CONNECT Hardware



Weight	11.5 kg	21.5 kg	3.9 kg
Dimensions	380W × 415D × 290H mm	522W × 522D × 671H mm	565W × 175D × 433H mm
Power requirements	100–240 VAC, 47–63 Hz	100–240 VAC, 50–60 Hz, 4.0A	90–264 VAC, 50–60 Hz, 25 W
Connectivity	Ethernet	USB, Ethernet, Display Port	USB, Ethernet, Display Port
Product code	URIDOTCONNECT	URIPLUSCONNECT	URIPLUSCONNECT

Flexible. Traceable. Sustainable.
The connected solution to Urine Microbiology.

MAST URI[®]

CONNECT

References:

1. Pathology in Practice. Streamlining urine microbiology: the Northampton experience. Vol 13(3) 2012.
2. Mast Group Ltd. Study conducted comparing 14 MPM plate set to 96 Petri dishes. 2023.
3. Microbe 2022. Comparative clinical performance of MAST URI Plates and Disc Diffusion. 2022.



IVD solutions through partnership

Mast Group Ltd.

Mast House, Derby Road, Bootle, Merseyside L20 1EA
Tel: + 44 (0) 151 933 7277 e-mail: sales@mast-group.com

Mast Diagnostica GmbH

Feldstrasse 20, DE-23858 Reinfeld
Tel: + 49 (0) 4533 2007 0 Fax: + 49 (0) 4533 2007 68 e-mail: mast@mast-diagnostica.de

Mast Diagnostic

12 Rue Jean-Jacques Mention, CS 91106, 80011 Amiens CEDEX 1
Tél. + 33 (0) 322 80 80 67 Fax + 33 (0) 322 80 99 22 e-mail: info@mast-diagnostic.fr